



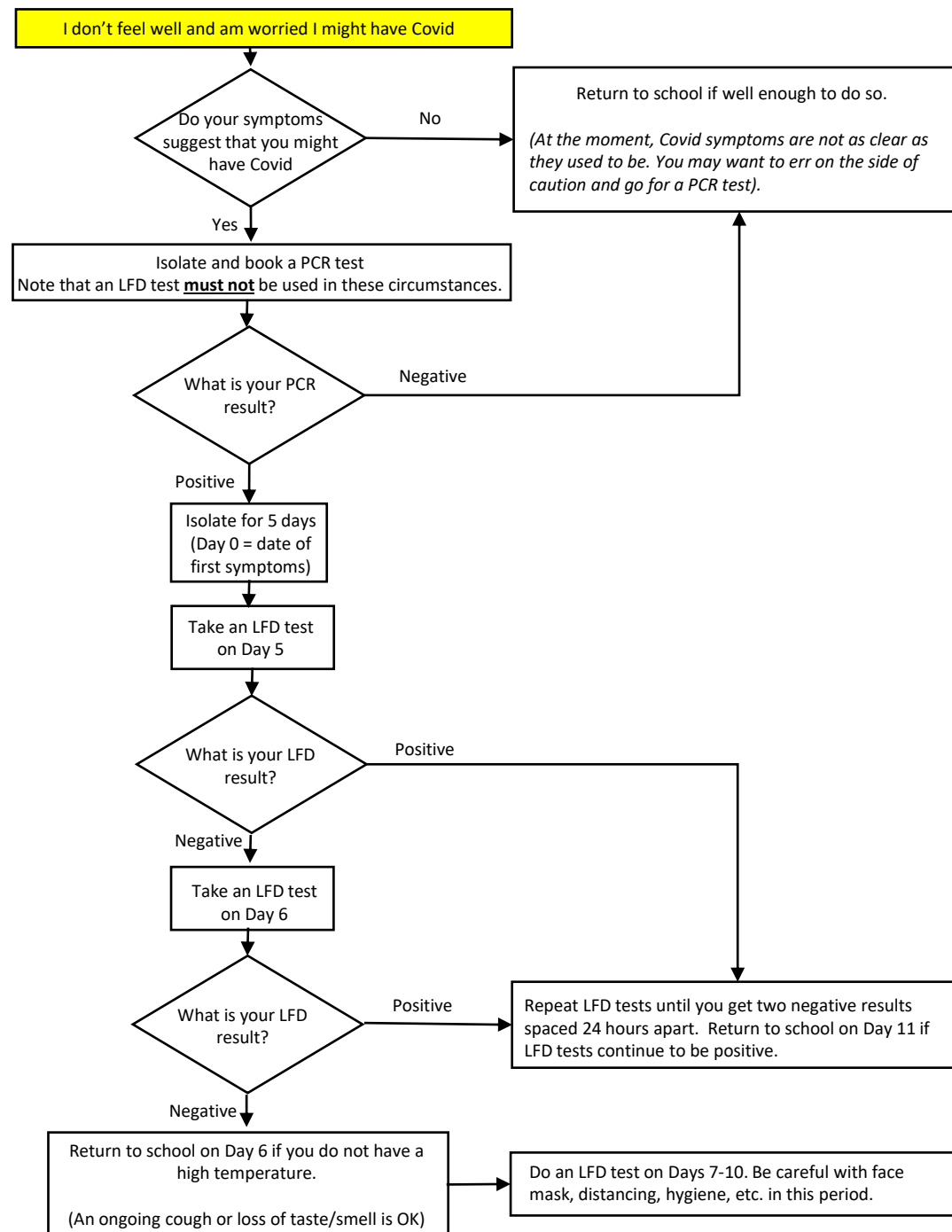
Covid Guidance

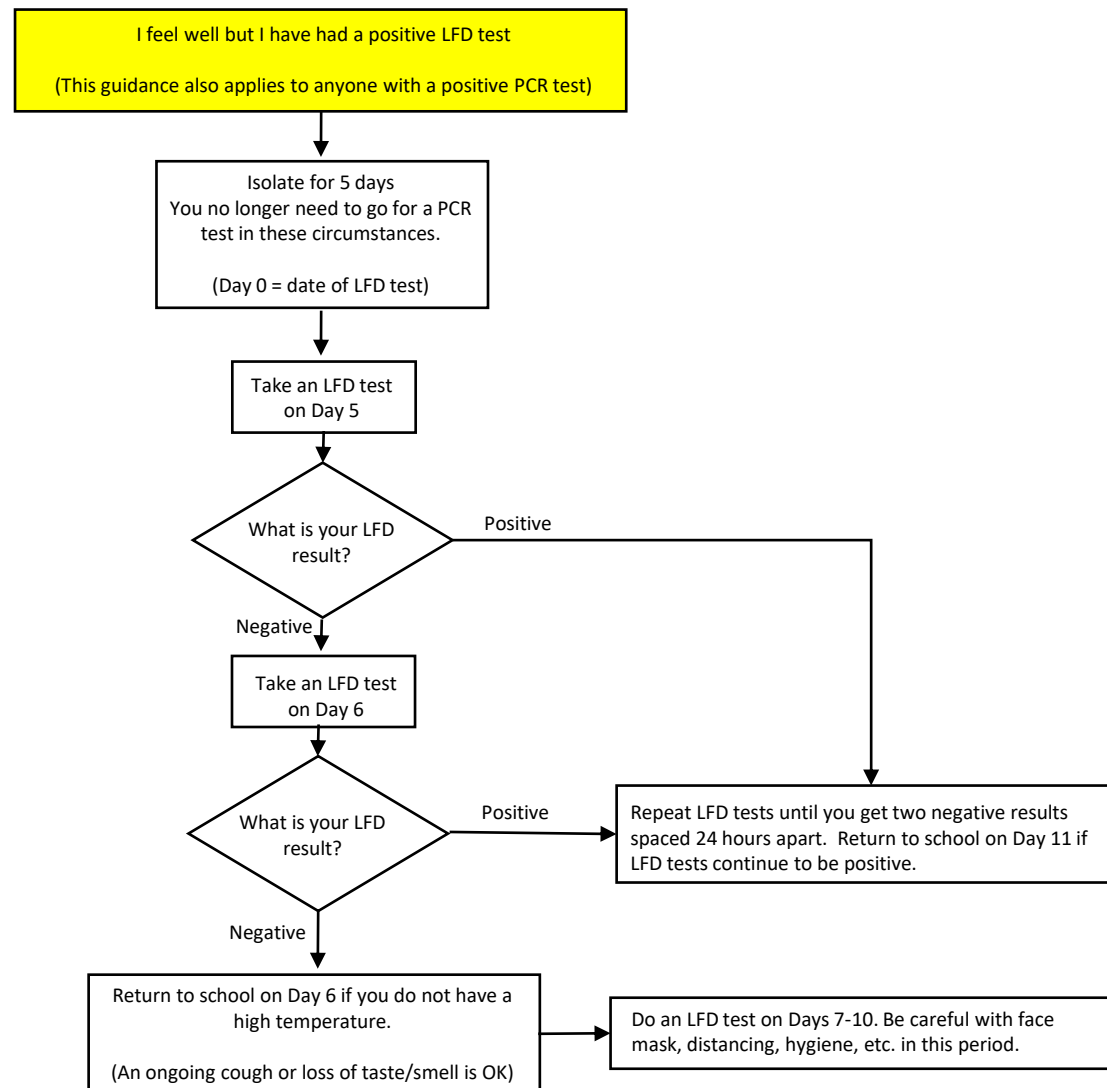
February 28th 2022

Covid Guidance for Students / Parents

Three key scenarios are illustrated in the flow charts that follow:

1. I don't feel well and am worried that I might have Covid.
2. I feel well but I have had a positive LFD / PCR test.
3. I am a close contact of someone who has tested positive.





I am a close contact of someone who has tested positive



You can return to school.
Take an LFD test for Days 1-7 (with Day 0 being the
last date of close contact) if you are able to do so.

Close contacts are now defined as someone in your household.